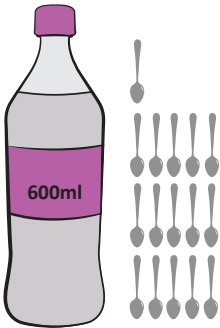




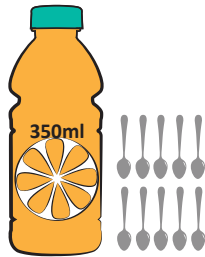
Kiliniki Nifo' ma'ae Fānau 'i he Komiuniti

Ta'etotongi ki he fānau mei he ta'u 0-17

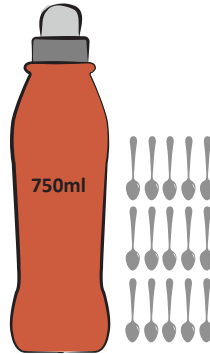
Ko e hā 'a e lahi 'o e suka 'i he inu koena?



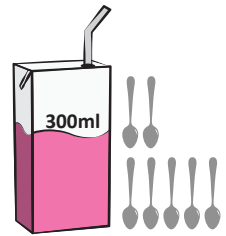
Inu fakalanu
Sepuni tī suka 'e 16



Huhua'i fo'i'akau
Sepuni tī suka 'e 10



Inu ki he kau sipoti
Sepuni tī suka 'e 15

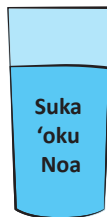


Hu'akau fakalanu
Sepuni tī suka 'e 7

NA'A KE 'ILO?



'Oku malava ke a'u 'a e lahi 'o e suka 'i he inu fakalahu, huhua'i fo'i'akau, inu ki he kau sipoti, hu'akau fakalanu' ki he sepuni tī suka 'e 5-7 'i he ipu sio'ata 250ml.



Vai mei he paipa
sepuni tī suka 'e 0



Ko e vai ko
e fili lelei
taha' ia.

Ko e hu'akau 'oku ma'ulalo pe fakasi'isi'i 'ai 'a e ngako pea 'ikai fakalanu ko e fili lelei mo ia foki.